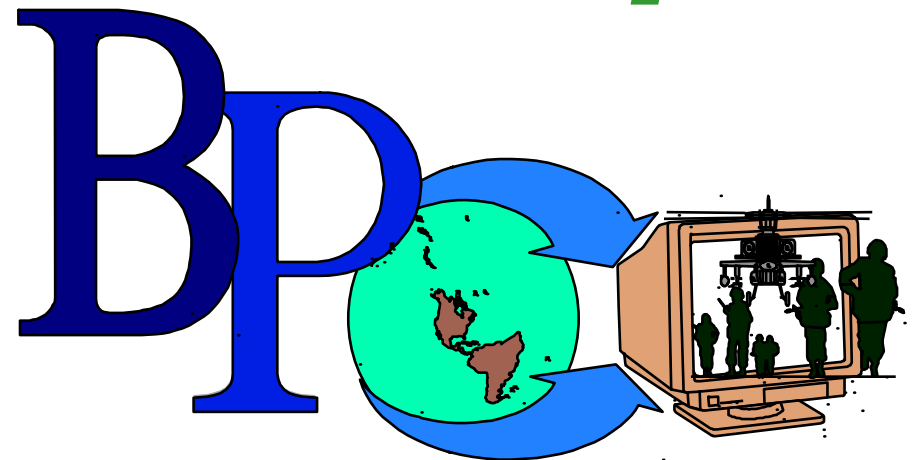


**LIGHTNING DIVISION**



# *78th Battle Projection Group*



"WE PUT THE POWER IN YOUR EXERCISE"

---

**1st Brigade (BCST), 78th TSD -**



# 78TH BPG MISSION



**The Battle Projection Group supports simulation command and staff training exercises for the Army National Guard and Army Reserve combat service support, combat support and combat arms units.**

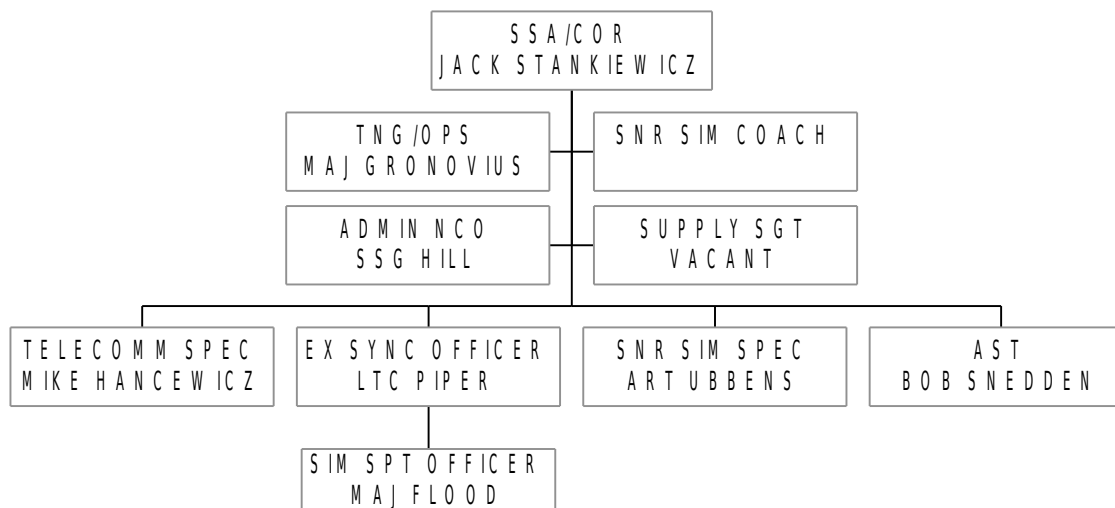
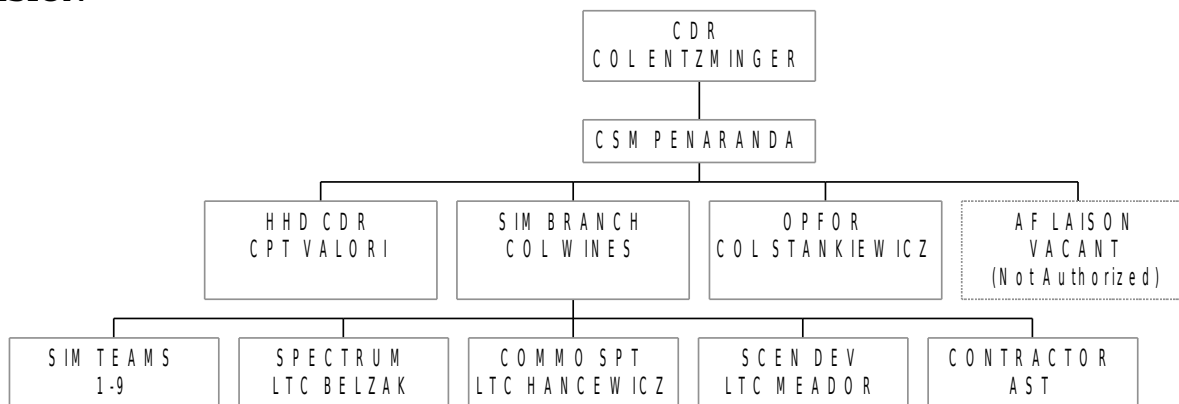
**Upon mobilization, the Group assists Mobilization Station Commanders in validating mobilized units for deployment.**

---

**1st Brigade (BCST), 78th TSD -**



# BPG ORGANIZATION

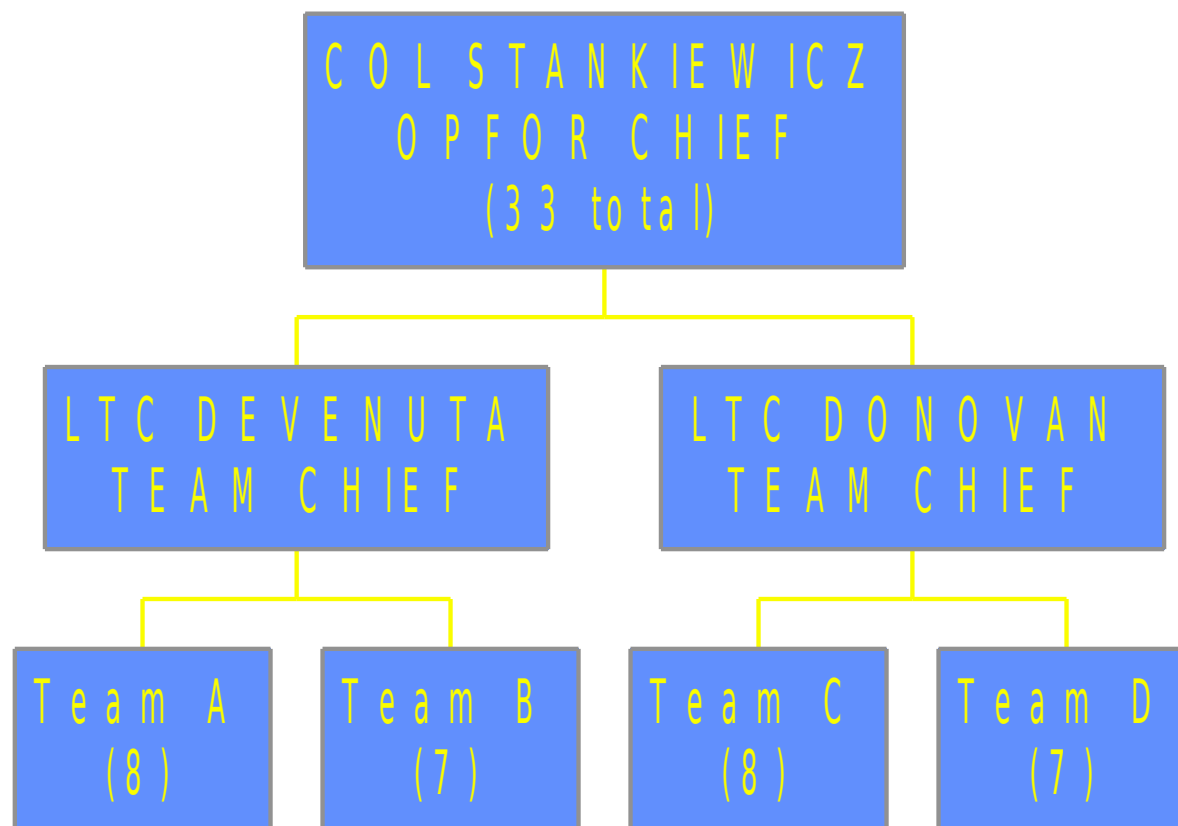


---

**1st Brigade (BCST), 78th TSD -**



# OPFOR, 78TH DIV (EX)

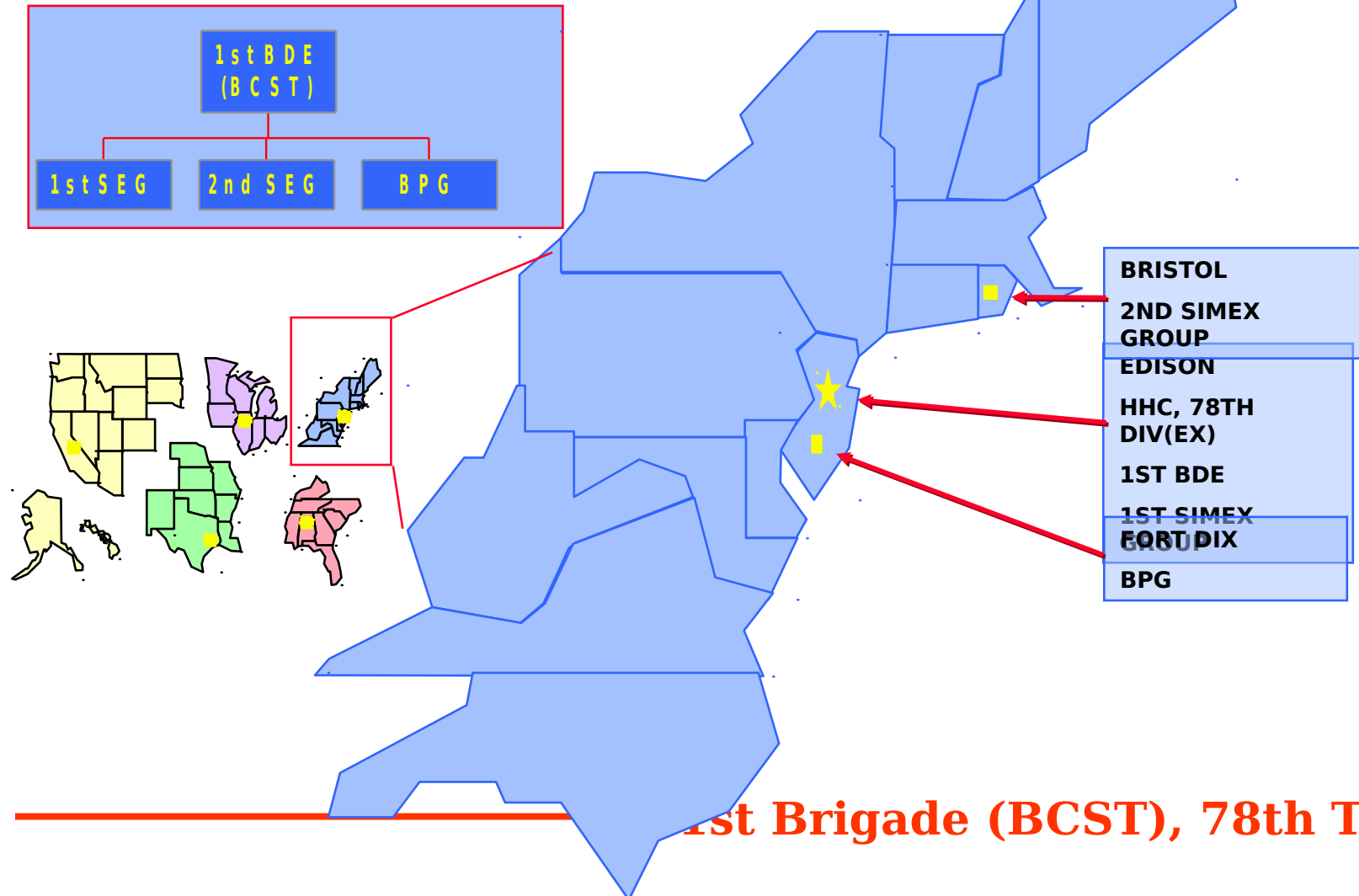


---

**1st Brigade (BCST), 78th TSD -**



# 1ST BDE (BCST) AREA OF RESPONSIBILITY





## OPFOR EXERCISE SUPPORT WORKLOAD

OPFOR	FY99	FY00	FY01	FY02	FY03
JANUS	3	1	0	0	0
SPECTRUM	0	1	2	3	1
BBS	3	2	3	2	2
CBS	5	5	4	6	7
CSSTSS	1	2	2	2	3

FY02 and FY03 are missions accepted, Others may be scheduled at a later date

---

**1st Brigade (BCST), 78th TSD -**



# Type of Units Exercised

- MP Brigades
- Engineer Brigades
- Field Artillery Brigades
- CSS Units: QM, TC, ORD, MED, PER
- 29th ID (Light)
- Aviation Brigades
- Civil Affairs

---

**1st Brigade (BCST), 78th TSD -**



# Issues

- OPFOR Certification POI
- Technical and Tactical/Doctrinal





# **“PAINT THE BATTLEFIELD” OPFOR CHECKLIST**



Date: \_\_\_\_\_

**Exercise POC:** \_\_\_\_\_

**Exercise #** \_\_\_\_\_.

**Exercise Date:** \_\_\_\_\_.

**Scenario/Playbox:**

**Type Sim:** (circle one) BBS, CBS, CSSTSS, SPECTRUM, JANUS

**What Capabilities-Based OPFOR Model?** (circle one) Northland, Orangeland, Marcalan,

**Other, explain:**

**1. What is the *mission* of the OPFOR for this Exercise? State the Mission:**

**1A. What is the Exercise Directors Intent? (eg. Portray front line units slowly retreating north. Execute limited number of level I attacks. Introduce a level III airborne force vic \_\_\_\_\_ on/about DTG \_\_\_\_\_ to disrupt logistics and secure \_\_\_\_\_.**

**1B. Free Play, Scripted, or Zones of Free Play?**

---

**1st Brigade (BCST), 78th TSD -**



# **"PAINT THE BATTLEFIELD" OPFOR CHECKLIST (cont.)**



**2. Should OPFOR Rep Brief at the CEB or Brief Separately?**

**3. What levels do you think the Icons should be built for OPFOR? Include *Size* and *Strength*:**

**Degrade % at STARTEX\_\_\_\_\_ %**

**What Units?**

**4. Starting Locations of OPFOR Units at STARTEX:**

**5. Use SPF and "stay behind troops"? \_\_\_\_\_ How many teams? \_\_\_\_\_  
Define the make-up of the  
team\_\_\_\_\_.**

**6. Any special type missions? What type? White Forces played?**

**7. OPFOR required to play BICM?**

**1st Brigade (BCST), 78th TSD -**



# **“PAINT THE BATTLEFIELD” OPFOR CHECKLIST (cont.)**



**8. Will Chemical Play/WMD be authorized? What kind of *agents* do you want?  
What vicinity?**

**Location of ChemStrike(s):  
Specific Delivery Systems:**

**9. Will BLUE AIR PLAY? What role? (air to air, CAS, BAI, rotary wing missions):**

**10. Red Air Play: Number of Sorties Authorized? Type Air Mission needed?  
Type Aircraft required?**

**Does the possibility of Air Insertion or Air Drop exists?  
What level threat (I, II, III)?  
Location(s)?**

**11. Counterbattery by OPFOR fire required/authorized? Notify Ex Dir prior to Counterbattery fire?**

---

**1st Brigade (BCST), 78th TSD -**



# **"PAINT THE BATTLEFIELD" OPFOR CHECKLIST (cont.)**



- 12. Missile Play: Frog/Scuds/SS21/Cruise/Dong : Number Authorized:  
Authorized to Attack lucrative/Doctrinally Correct Targets? Define the  
parameters to use Missiles:**
- 13. Mines and Obstacles: Authorized? Do You Require Bridge(s) Destroyed?  
Location:**
- 14. Define parameters to use Mines and Obstacles:**
- 15. Constraints:**
- 16. Resupply Rate (BBS): How will OPFOR be Re-supplied? Self-Supply given  
to OPFOR?**

**HRC will re-supply?  
How often?**



# **"PAINT THE BATTLEFIELD" OPFOR CHECKLIST (cont.)**

17. **Input to MSEL: Would you like OPFOR input to MSEL?  
Where/When?**
18. **OPFOR REQUIRES MSEL before the XR. Poc to send the MSEL is**  
\_\_\_\_\_  
\_\_\_\_\_, Ph. \_\_\_\_\_  
#\_\_\_\_\_. E-  
mail: \_\_\_\_\_
19. **Are there any MSR's requiring mines or ambush? Name and location?  
Time window/Conditions?**
20. **Do you require OPFOR to brief at the Battle Hand-Off? AAR? Do  
you require a VCR tape to be done to go to the remote site?**



# **"PAINT THE BATTLEFIELD" OPFOR CHECKLIST (cont.)**



- 21. Do you require OPFOR to brief at the Battle Hand-Off? AAR? Do you require a VCR tape to be done to go to the remote site?**
- 22. Will OPFOR use BLUFOR Phase and Control Lines for Better Control ?**  
**Should OPFOR develop their own phase and control lines? \_\_\_\_\_**
- 23. Will BLUFOR Play ADA? \_\_\_\_\_. Will OPFOR Play ADA? \_\_\_\_\_**
- 24. Does OPFOR need to plan to conduct SEAD missions and build Strike Packages?**
- 25. Collection Plan: What do you want the OPFOR to capture to aid in the AAR? Give details.**



LIGHTNING DIVISION



## **PAINT THE BATTLEFIELD” OPFOR CHECKLIST (cont.)**

**26. REMARKS: List any items that help paint the battlefield and define the rules of engagement (ROE)/combat battle instructions (CBI). To minimize “magic moves”, coordinate with OPFOR to see if the task you need can be done in a doctrinally correct manner that the system can replicate. (OPFOR’s goal is to use zero magic moves.)**



# Questions?

---

**1st Brigade (BCST), 78th TSD -**